

# Sinetica

## Solutions for Power and Environmental Management

Unite Technologies own and sell the Sinetica brand of products. The Sinetica range provides monitoring network based solutions for all your power monitoring and control requirements for the datacentre, the computer room and the rack.

Sinetica Rack monitoring units can be used for the monitoring and control of power, environment and cabinet access. They use a secure web-based interface and SNMP. Critical events can be monitored effectively with multiple, programmable thresholds.

### Powerhawk<sup>2</sup>

This unit monitors and controls 2 power strips and 2 environmental sensors.

The optimum solution for in-rack power management, providing all data via a single IP address.



### Eagle-i

The Eagle-i is a network attached device, designed to provide room or multi rack level power, environmental monitoring and physical access control, using a single IP address.



### Intelligent Power Strips

Real-time data provided via a connection to the network which is also shown on a local LCD display. 4-level alarms via SNMP trap can be configured in true rms volts, amps and either kWh or KVA.

Each outlet can also, if required, be remotely switched via secure web interface or bespoke SNMP management software. We supply almost any configuration of ampage, number of outlets, inlets etc. Monitoring per outlet available from July '08.



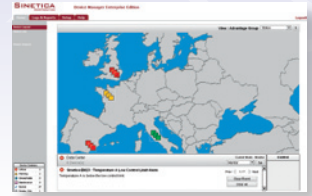
### In-line Monitoring Units

As well as all the benefits of the intelligent power strips, these units provide a method of adding monitoring to existing installations, or to stand-alone equipment in the computer room.



### Sinetica Management Software

A bespoke solution for monitoring and controlling multiple Powerhawk-2 and Hawk-i2 controllers where no other network management system is in place. JPG graphics of any type are accepted allowing customisation of the user interface to show multiple data centres, floor layouts etc, very easily.



The software captures and displays active alarms for the purpose of checking overall datacentre health.

The software also collects environmental and power parameters regularly for data trending and reporting.

### Environmental Sensors

The following sensors are available:

Microswitch Door Sensor



Magnetic Door Sensor



Temperature Sensor



Water Sensor (contact type)



Humidity Sensor



Air Flow Sensor



Metal keypad



Flashing Xenon Beacon



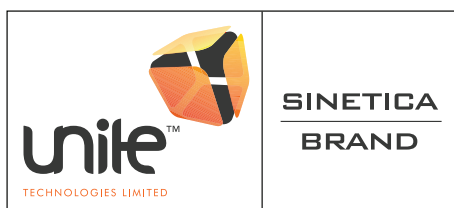
Water Sensor (rope type)



Smoke Detector



PIR Sensor



CableTalk  
Unit 13, Saxon Business Centre, Windsor Avenue  
Merton, London, SW19 2RR, GB

Tel: 020 87150088 Fax: 020 87150077

Email: info@cable-talk.co.uk Web: www.cable-talk.co.uk